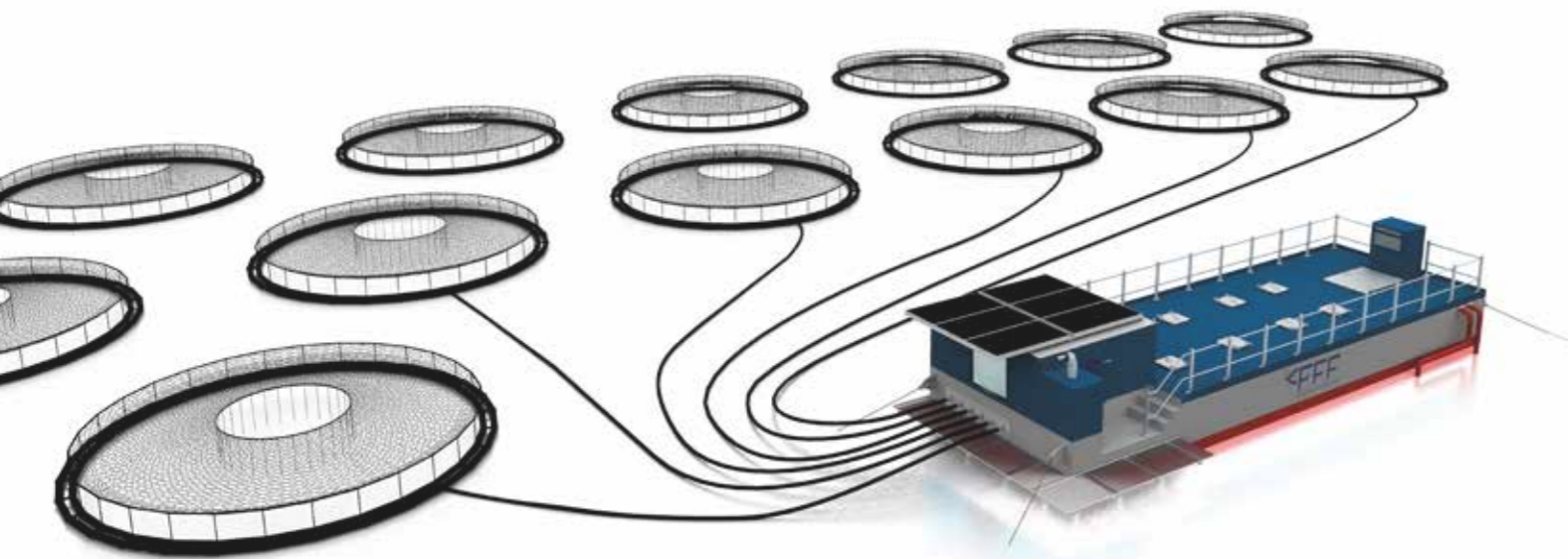
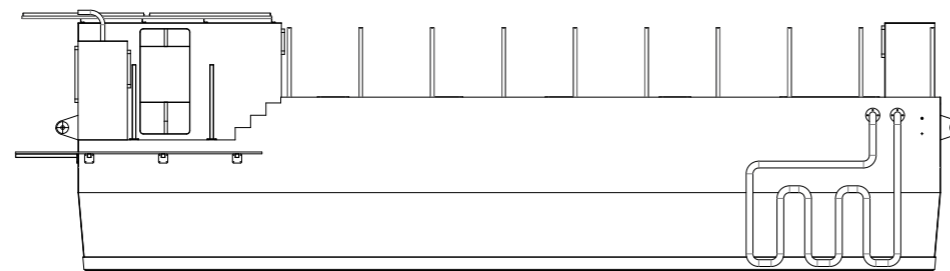




Mini Feed Barge

Small Feed Barge up to 50 Tons

- Length - total (LOA) **14 m.**
- Beam - total (BOA) **4,5 m.**
- Minimum freeboard **0,96 m.**
- Weight **25 Ton.**



www.fishfarmfeeder.com



Selector

- Selector Matrix
2 Selectors x 8 outlets **16**
- Diameter **75 mm.**
- Pellet Size **>6 mm.**
- Blower 15 kW **2**
- Feeding Rate **50 Kg/m.**



Feeding Capacity

- Number silos: **4**
- Silo Capacity **9 Tons.**
- Total Silo Capacity **35 Tons.**
- Silo Volume **11 m3**
- Total Silo Volume **44 m3**
- Dosers (Auger Screws) **8**
- Intermediate hoppers **4**



Barge Specifications



- Generators **1**
- Diesel tank **1**
- Diesel tank capacity (m3): **0,5**
- Freshwater tank **1**
- Freshwater tank, capacity (m3): **80 l.**
- Sewage **1**
- Sewage tank, capacity (m3): **80 l.**
- Control room **12 m²**

